

SureSnap® V21

Description:

Capable of dispensing liquids, gases or powders at controlled dosages, the two-piece SureSnap® valve is ideally suited for applications that require effective flow control with few components or moving parts. This valve replaces multi-component ball and spring or other complex check valves and flow control valves. The SureSnap® is secure, dependable, and affordable and available in a wide range of sizes to fit various needs.

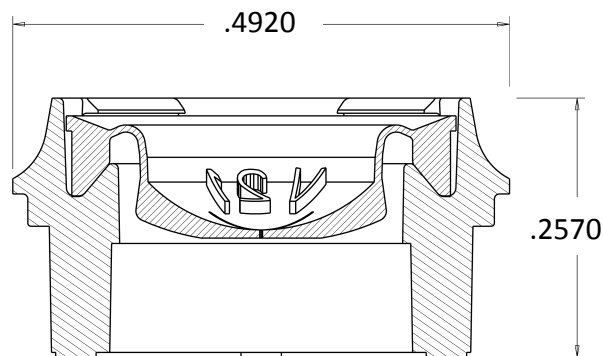
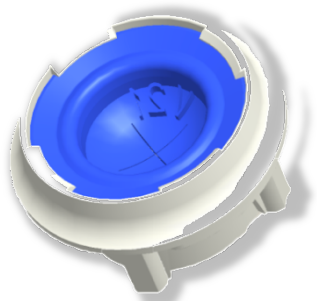
Valve Characteristics:

- **Outside Diameter:** ZA375 ~ 0.468" SA375 ~ 0.492"
- **Material:** ZA375- Silicone, PP retainer; SA375- Silicone, HDPE retainer
- **Valve Type:** V style, rolling sleeve
- **Slit Options:** ZA375: 0.200" cross slit only. SA375: All noted below
- **Unique properties/common applications:** Small valve; best for thin to medium viscosity products; easy feeling dispense.

Valve Performance by Slit Size

SLIT SIZE Inches/mm	OPEN (H ₂ O Column Height) Inches/mm/PSI	CLOSE (H ₂ O Column Height) Inches/mm/PSI	Constant Flow (@ 30" of H ₂ O) ml/sec
.070 / 1.778	19 / 483 / .69	12 / 305 / .43	3
.100 / 2.540	19 / 483 / .69	11 / 279 / .40	6
.145 / 3.683	19 / 483 / .69	10 / 254 / .36	10
.187 / 4.750	19 / 483 / .69	9 / 229 / .32	13
.200 / 5.080	19 / 483 / .69	8 / 203 / .29	15

Slit sizes above reflect standard cross-slit design
UNCONTROLLED SPECIFICATIONS SUBJECT TO CHANGE WITHOUT NOTICE



SA375

SureSnap® V25

Description:

Capable of dispensing liquids, gases or powders at controlled dosages, the two-piece SureSnap® valve is ideally suited for applications that require effective flow control with few components or moving parts. This valve replaces multi-component ball and spring or other complex check valves and flow control valves. The SureSnap® is secure, dependable, and affordable and available in a wide range of sizes to fit various needs.

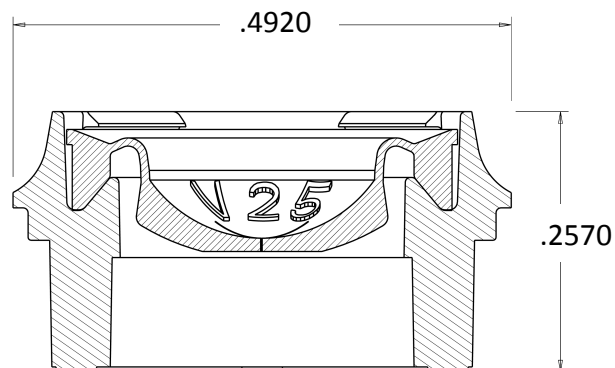
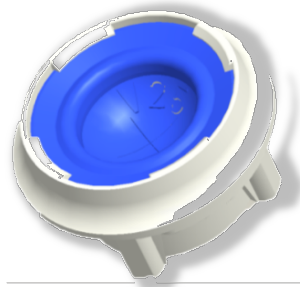
Valve Characteristics:

- **Outside Diameter:** ZA375 ~ 0.468" SA375 ~ 0.492"
- **Material:** ZA375- Silicone, PP retainer; SA375- Silicone, HDPE retainer
- **Valve Type:** V style, rolling sleeve
- **Slit Options:** ZA375: 0.200" cross slit only. SA375: All noted below
- **Unique properties/common applications:** Small valve; good for medium to thick products like sauces; provides strong product cut-off

Valve Performance by Slit Size

SLIT SIZE Inches/mm	OPEN (H ₂ O Column Height) Inches/mm/PSI	CLOSE (H ₂ O Column Height) Inches/mm/PSI	Constant Flow (@ 30" of H ₂ O) ml/sec
.070 / 1.778	26 / 660 / .94	19 / 483 / .69	2
.100 / 2.540	26 / 660 / .94	17 / 432 / .61	6
.145 / 3.683	26 / 660 / .94	15 / 381 / .54	9
.187 / 4.750	26 / 660 / .94	10 / 254 / .36	16
.200 / 5.080	26 / 660 / .94	10 / 254 / .36	16

UNCONTROLLED SPECIFICATIONS SUBJECT TO CHANGE WITHOUT NOTICE



SA375

SureSnap® V1

Description:

Capable of dispensing liquids, gases or powders at controlled dosages, the two-piece SureSnap® valve is ideally suited for applications that require effective flow control with few components or moving parts. This valve replaces multi-component ball and spring or other complex check valves and flow control valves. The SureSnap® is secure, dependable, and affordable and available in a wide range of sizes to fit various needs.

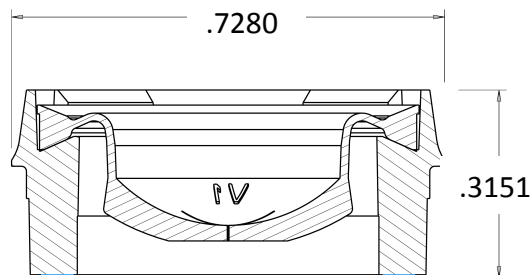
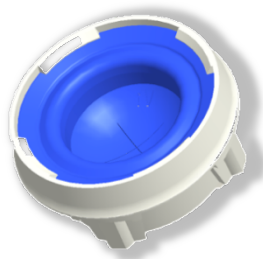
Valve Characteristics:

- **Outside Diameter:** SA634 ~ 0.728"
- **Material:** Silicone; HDPE retainer (can be PP)
- **Valve Type:** V style, rolling sleeve
- **Unique properties/common applications:** Designed to be used with medium to thick viscosity products and allow for good cut-off

Valve Performance by Slit Size

SLIT SIZE Inches/mm	OPEN (H ₂ O Column Height) Inches/mm/PSI	CLOSE (H ₂ O Column Height) Inches/mm/PSI	Constant Flow (@ 30" of H ₂ O) ml/sec
.070 / 1.778	29 / 737 / 1.05	26 / 660 / .94	0.2
.130 / 3.302	23 / 584 / .83	16 / 406 / .56	4.3
.160 / 4.064	23 / 584 / .83	15 / 381 / .54	7.4
.187 / 4.750	23 / 584 / .83	14 / 356 / .50	10.0
.220 / 5.588	23 / 584 / .83	13 / 330 / .45	12.9
.250 / 6.350	23 / 584 / .83	10 / 254 / .36	16.4
.280 / 7.112	23 / 584 / .83	9 / 229 / .32	19.8
.320 / 8.128	22 / 559 / .79	6 / 159 / .22	26.5

UNCONTROLLED SPECIFICATIONS SUBJECT TO CHANGE WITHOUT NOTICE



SureSnap® V2

Description:

Capable of dispensing liquids, gases or powders at controlled dosages, the two-piece SureSnap® valve is ideally suited for applications that require effective flow control with few components or moving parts. This valve replaces multi-component ball and spring or other complex check valves and flow control valves. The SureSnap® is secure, dependable, and affordable and available in a wide range of sizes to fit various needs.

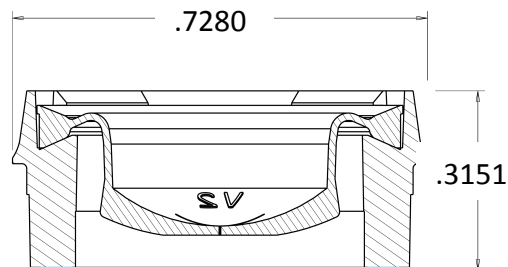
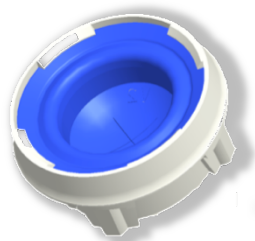
Valve Characteristics:

- **Outside Diameter:** SA634 ~ 0.728"
- **Material:** Silicone; HDPE retainer (can be PP)
- **Valve Type:** V style, rolling sleeve
- **Unique properties/common applications:** High flow and easy dispense. Ideal for thin to medium products. Often used in sports bottle applications (for example).

Valve Performance by Slit Size

SLIT SIZE Inches/mm	OPEN (H ₂ O Column Height) Inches/mm/PSI	CLOSE (H ₂ O Column Height) Inches/mm/PSI	Constant Flow (@ 30" of H ₂ O) ml/sec
.070 / 1.778	18 / 457 / .65	10 / 254 / .36	2.5
.130 / 3.302	17 / 432 / .61	9 / 229 / .32	10.1
.160 / 4.064	17 / 432 / .61	9 / 229 / .32	15.0
.187 / 4.750	17 / 432 / .61	8 / 203 / .29	18.9
.220 / 5.588	17 / 432 / .61	7 / 178 / .25	23.7
.250 / 6.350	17 / 432 / .61	7 / 178 / .25	29.0
.280 / 7.112	17 / 432 / .61	5 / 127 / .18	36.7
.320 / 8.128	17 / 432 / .61	4 / 102 / .14	47.1

UNCONTROLLED SPECIFICATIONS SUBJECT TO CHANGE WITHOUT NOTICE



SureSnap® V5

Description:

Capable of dispensing liquids, gases or powders at controlled dosages, the two-piece SureSnap® valve is ideally suited for applications that require effective flow control with few components or moving parts. This valve replaces multi-component ball and spring or other complex check valves and flow control valves. The SureSnap® is secure, dependable, and affordable and available in a wide range of sizes to fit various needs.

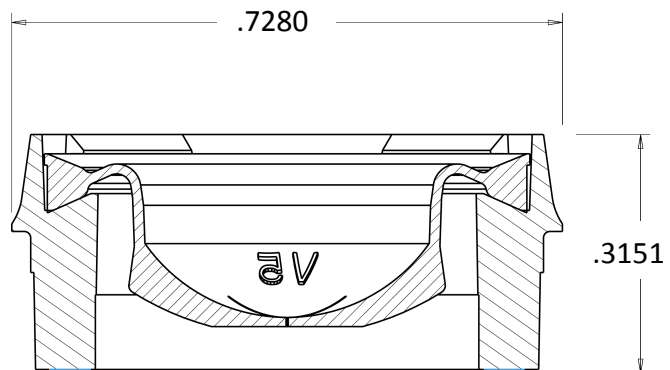
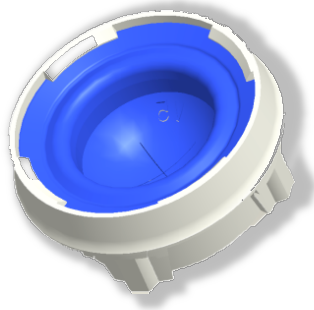
Valve Characteristics:

- **Outside Diameter:** SA634 ~ 0.728"
- **Material:** Silicone; HDPE retainer (can be PP)
- **Valve Type:** V style, rolling sleeve
- **Unique properties/common applications:** Fast opening and closing valve. Ideal for soap and other medium viscous liquids where a quick dispense is needed.

Valve Performance by Slit Size

SLIT SIZE Inches/mm	OPEN (H ₂ O Column Height) Inches/mm/PSI	CLOSE (H ₂ O Column Height) Inches/mm/PSI	Constant Flow (@ 30" of H ₂ O) ml/sec
.070 / 1.778	20 / 508 / .72	11 / 279 / .40	2.2
.160 / 4.064	20 / 508 / .72	9 / 229 / .32	14.2
.187 / 4.750	21 / 533 / .76	9 / 229 / .32	17.4
.220 / 5.588	20 / 508 / .72	7 / 178 / .25	20.7
.250 / 6.350	20 / 508 / .72	6 / 152 / .22	24.1
.280 / 7.112	20 / 508 / .72	4 / 102 / .14	29.3
.320 / 8.128	20 / 508 / .72	2 / 51 / .07	35.4

UNCONTROLLED SPECIFICATIONS SUBJECT TO CHANGE WITHOUT NOTICE



SureSnap® V6

Description:

Capable of dispensing liquids, gases or powders at controlled dosages, the two-piece SureSnap® valve is ideally suited for applications that require effective flow control with few components or moving parts. This valve replaces multi-component ball and spring or other complex check valves and flow control valves. The SureSnap® is secure, dependable, and affordable and available in a wide range of sizes to fit various needs.

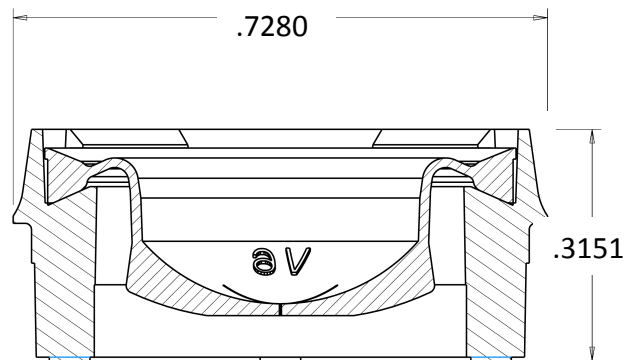
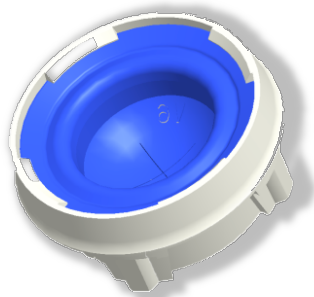
Valve Characteristics:

- **Outside Diameter:** SA634 ~ 0.728"
- **Material:** Silicone; HDPE retainer (can be PP)
- **Valve Type:** V style, rolling sleeve
- **Unique properties/common applications:** Easy feel dispense with more control. Ideal for medium viscosity products like soaps and sauces that require more control.

Valve Performance by Slit Size

SLIT SIZE Inches/mm	OPEN (H ₂ O Column Height) Inches/mm/PSI	CLOSE (H ₂ O Column Height) Inches/mm/PSI	Constant Flow (@ 30" of H ₂ O) ml/sec
.130 / 3.302	17 / 432 / .61	12 / 305 / .43	8.3
.187 / 4.750	17 / 432 / .61	11 / 279 / .40	13.2
.220 / 5.588	17 / 432 / .61	11 / 279 / .40	16.5
.250 / 6.350	18 / 457 / .65	10 / 254 / .36	19.5
.280 / 7.112	17 / 432 / .61	10 / 254 / .36	21.7
.320 / 8.128	18 / 457 / .65	9 / 229 / .32	26.0

UNCONTROLLED SPECIFICATIONS SUBJECT TO CHANGE WITHOUT NOTICE



SureSnap® V7

Description:

Capable of dispensing liquids, gases or powders at controlled dosages, the two-piece SureSnap® valve is ideally suited for applications that require effective flow control with few components or moving parts. This valve replaces multi-component ball and spring or other complex check valves and flow control valves. The SureSnap® is secure, dependable, and affordable and available in a wide range of sizes to fit various needs.

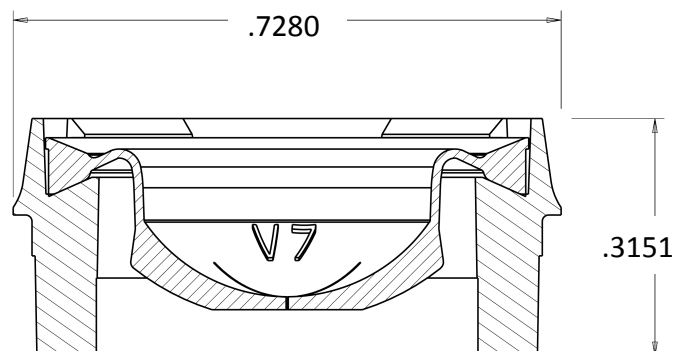
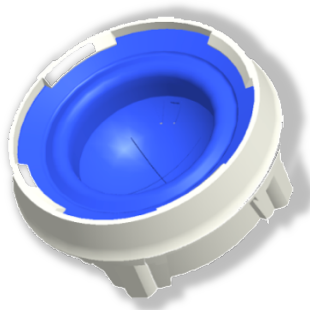
Valve Characteristics:

- **Outside Diameter:** SA634 ~ 0.728"
- **Material:** Silicone; HDPE retainer (can be PP)
- **Valve Type:** V style, rolling sleeve
- **Unique properties/common applications:** Easy feeling dispense with high flow; designed for thin to medium viscosity liquids; commonly used in hydration bottles

Valve Performance by Slit Size

SLIT SIZE Inches/mm	OPEN (H ₂ O Column Height) Inches/mm/PSI	CLOSE (H ₂ O Column Height) Inches/mm/PSI	Constant Flow (@ 30" of H ₂ O) ml/sec
.130 / 3.302	25 / 635 / .90	12 / 305 / .43	10.1
.187 / 4.750	25 / 635 / .90	9 / 229 / .32	18.1
.220 / 5.588	25 / 635 / .90	7 / 178 / .25	23.2
.250 / 6.350	25 / 635 / .90	4 / 102 / .14	29.8
.280 / 7.112	25 / 635 / .90	1 / 25 / .04	33.9

UNCONTROLLED SPECIFICATIONS SUBJECT TO CHANGE WITHOUT NOTICE



SureSnap® V53

Description:

Capable of dispensing liquids, gases or powders at controlled dosages, the two-piece SureSnap® valve is ideally suited for applications that require effective flow control with few components or moving parts. This valve replaces multi-component ball and spring or other complex check valves and flow control valves. The SureSnap® is secure, dependable, and affordable and available in a wide range of sizes to fit various needs.

Valve Characteristics:

- **Outside Diameter:** SA634 ~ 0.728"
- **Material:** Silicone; HDPE retainer (can be PP)
- **Valve Type:** V style, rolling sleeve
- **Unique properties/common applications:** Higher opening pressure option; used in applications where a higher opening pressure valve is required

Valve Performance by Slit Size

SLIT SIZE Inches/mm	OPEN (H ₂ O Column Height) Inches/mm/PSI	CLOSE (H ₂ O Column Height) Inches/mm/PSI	Constant Flow (@ 30" of H ₂ O) ml/sec
.320 / 8.128	60 / 1524 / 2.16	47 / 1194 / 1.70	--

UNCONTROLLED SPECIFICATIONS SUBJECT TO CHANGE WITHOUT NOTICE

